

August 7, 2017

## Safely driving in a roundabout

Roundabouts are designed to make intersections safer and more efficient for drivers, pedestrians and cyclists. There are two types of roundabouts: [Single-lane roundabouts](#) and [multi-lane roundabouts](#).

There are a few key things to remember about driving roundabouts:

- Yield to drivers in the roundabout
- Stay in your lane; do not change lanes
- Do not stop in the roundabout

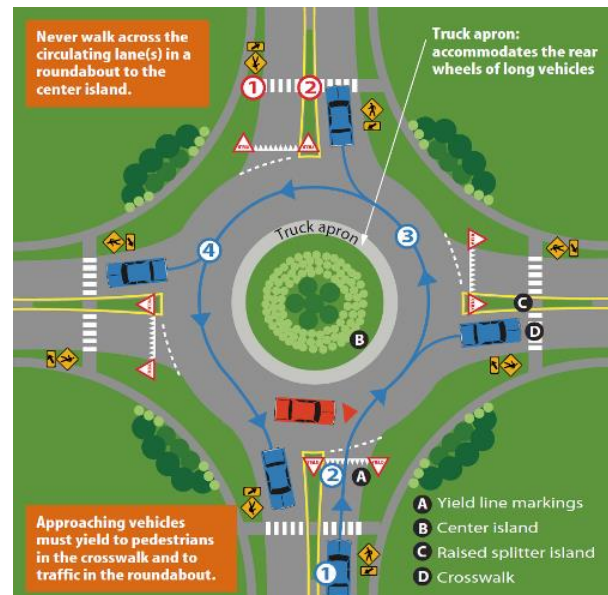
### **Driving single-lane roundabouts**

As you approach a roundabout, you will see a yellow "roundabout ahead" sign with an advisory speed limit for the roundabout.

Slow down as you approach the roundabout, and watch for pedestrians in the crosswalk.

Continue toward the roundabout and look to your left as you near the yield sign and dashed yield line at the entrance to the roundabout. Yield to traffic already in the roundabout.

Once you see a gap in traffic, enter the circle and proceed to your exit. If there is no traffic in the roundabout, you may enter without yielding.



Look for pedestrians and use your turn signal before you exit, and make sure to stay in your lane as you navigate the roundabout.

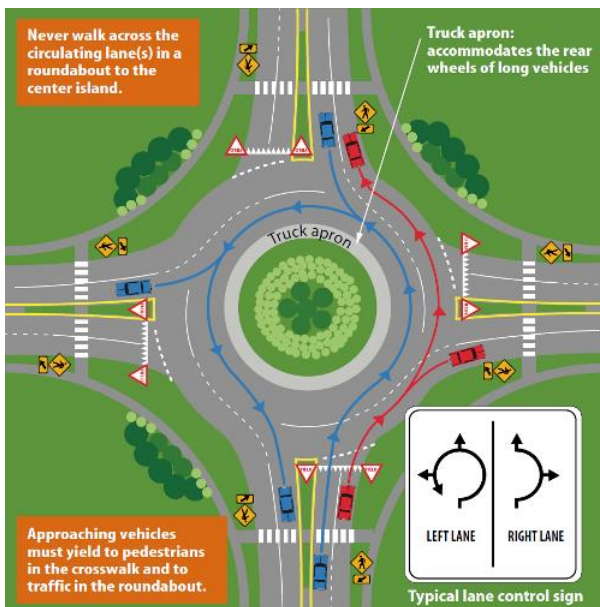
## Driving multi-lane roundabouts

In a multi-lane roundabout, you will see two signs as you approach the intersection: The yellow "roundabout ahead" sign and a black-and-white "lane choice" sign. You will need to choose a lane prior to entering the roundabout.

You choose your lane in a multi-lane roundabout the same way you would in a traditional multi-lane intersection. To go straight or right, get in the right lane. To go straight or left, get in the left lane. Drivers can also make U-turns from the left lane.

The graphics below show what turns can be made in multi-lane roundabouts. The arrows in yellow show the movements that can be made from the right lane, and the arrows in green show the movements that can be made from the left lane.

Once you have selected your lane, watch for pedestrians in the crosswalk as you approach the roundabout.



At the dashed yield line, look to your left and yield to drivers already in the roundabout. Remember, in a multi-lane roundabout, you must yield to **both lanes** of traffic.

Once a gap in traffic appears, merge into the roundabout and proceed to your exit. Look for pedestrians and use your turn signal before you exit. If there is no traffic in the roundabout, you may enter without yielding.